



CAPABILITIES & EXPERIENCE

CIVIL ENGINEERING AND CONSTRUCTION



COMPANY PROFILE

Proform Civil is an experienced earthmoving civil contractor located in Brigadoon Western Australia. With a wealth of experience in civil engineering and construction projects across WA, we pride ourselves on our fleet of late-model and well-maintained Caterpillar equipment, skilled and experienced operators, and a focus on safety and performance to ensure we will keep your project on the move.

Founded by Dale Weerts in 2013, the company started out providing civil engineering consultant services such as design and surveying on government and mining projects, with a large focus on road pavement, stormwater hydrological design and construction supervision. As the family business grew, so did our fleet of earthmoving machinery and operators, a highly functioning team that have successfully delivered many design and construction projects including road building, car parks and stormwater network installations.

COMPLEX PROJECT SPECIALISTS

Procuring Proform Civil as your earthmoving contractor is an easy choice when you're looking for a professional service on a complex project.

With intricate knowledge of civil engineering standards and the ability to undertake modelling or calculations, Proform Civil thrives on more complicated projects where complex engineering solutions may be required to be generated on the spot.



OUR SERVICES

Proform Civil offers a broad range of civil engineering capabilities including civil works, earthmoving, road construction and land development.

CIVIL WORKS

- Road Construction and Pavements
- Subdivision Construction
- Water and Sewer Excavation and Installation
- Stormwater Excavation and Installations
- Government, Local Government and Asset Owners Services

ROAD CONSTRUCTION

- Road Construction
- Road Formation
- Stabilisation
- Shoulder Maintenance and Repairs
- Asphalt, Kerbing & Bitumen Works

EARTHMOVING

- Site Clearing
- Bulk Earthworks
- Rehabilitation
- Complex Civil Earthworks

LAND DEVELOPMENT

- Green Title
- Survey Strata
- Commercial Estates
- Industrial Estates
- Semi-Rural Estates



QUALITY ASSURANCE

Our quality assurance processes on civil construction projects ensures commitment to deliver outlasting quality products.

CLIENT FOCUSSED

Proform Civil is your local earthmoving contractor with an excellent reputation having most of our work scheduled from word-of-mouth recommendations or repeat clients.

Our reliability, dedication and excellence in communication gives our clients confidence, allowing them to focus on their project goals without the distractions of contractor performance. We deliver the highest quality so that our infrastructure will perform well and outlast its intended lifetime. We only supply quality products from reputable suppliers and our work is of high quality, neat and professional appearance.

Key clients both current and in the past include:

- Department of Biodiversity, Conservation & Attractions (DBCA)
- City of Swan
- Water Corporation
- Western Stabilisers
- JFK Custom Homes
- Shire of Kondinin
- Mapel Building Pty Ltd
- Master Projects Pty Ltd
- Shire of Quairading
- Shire of Toodyay
- Shire of Cunderdin
- Shire of Goomalling
- Shire of Mundaring



OUR TEAM

Proform Civil is a family-owned and run company with an experienced team of truck drivers, operators, civil contractors and mechanics. We have an excellent rapport with our subcontractors, suppliers and clients thanks to our passionate and experienced team.



DALE WEERTS - FOUNDER

Dale Weerts has a strong background in civil engineering with over 17 years experience providing civil design, project management and supervision, heavy plant operation and construction.

Dale has delivered many design projects such as Gnangara Road and Henley Brook Ave Duplications, and has also constructed many civil projects such as Maralla Rd/Railway Parade Intersection and Park Road Extension.

He is also a father of three, and enjoys 4wd-ing and camping in his limited spare time.



COURTNEY WEERTS - ADMINISTRATION

Courtney Weerts started her career in Local Government working in finance, obtaining a Certificate III in financial services.

Courtney is strongly committed to Proform Civil providing administration, HR and friendly customer service for our clients and staff.

Courtney has an eye for detail on site, particularly in the final presentation of our high-end projects. She also enjoys fitness, cooking and mothering her three children.



OUR VALUES

COMMUNICATION

We provide consistent, transparent and well-documented communication. We can also offer technical advice and are keen problem-solvers, helping you to find the most efficient solutions for a success project.

HONESTY & INTEGRITY

While every project has its challenges, it's trust in the people you are working with that makes a successful project. As a team, we endorse honesty and integrity which permeates our actions, words, and decisions. We treat our clients and project stakeholders how we would like to be treated.

QUALITY & AESTHETICS

If it looks good it is good. We take the extra mile approach to every task so that we can take pride in delivering a long-lasting, high quality and presentable project. We pride ourselves on well-kept machinery and will always leave your work site neat and tidy.

CLIENT & EMPLOYEE SATISFACTION

We hand-pick our dedicated team of operators. We believe that by supporting our workers with comfortable work conditions and a positive environment they will be happier and more able to deliver high-end results.

We strive for customer satisfaction. We take time to understand our client's unique needs and values so that they can be considered throughout each stage of the project, ensuring the best possible outcome for the project and our clients.

MEET THE FLEET

Proform Civil has a fleet of well-maintained and late model machinery.



EXCAVATORS

Excavator 25 ton Caterpillar 325 with GPS 2022
Excavator 15 ton Caterpillar 315GC 2021
Excavator 5.5 ton ECB



LOADERS

Loader 938 K Bucket and Forks
Loader 930G IT Bucket and Jib
Positrack Caterpillar 259D3 2021



ROLLERS / COMPACTION

12 ton Roller Steel Drum Combi Caterpillar CS12GC 2023
2.5 ton Roller Double Steel Drum (Wacker Neuson)
Plate Compacter 70 / 70 bomag



TRUCKS

Mack Fleetliner Prime Mover 90 ton Rated
Volvo FM450 Prime Mover 60 ton Rated
Water Truck - 9000 L



TRAILERS

Triaxle Float Freightmore Transport 32 ton GTM
Pig Trailers - 16.6 ton GTM
Triaxle Side Tipper



LV VEHICLES

Toyota Landcruiser Single Cab Ute

EXCAVATORS

CATERPILLAR 315GC 15T 2021



CATERPILLAR 325 WITH GPS 25T 2022



LOADERS

CATERPILLAR 930G



CATERPILLAR 938K 2023



ROLLERS

CATERPILLAR CS12GC SMOOTH DRUM 2023



CATERPILLAR CS12GC PAD FOOT 2023



TRUCKS / PRIME MOVERS

VOLVO FM450 PRIME MOVER



WATER TRUCK 9000L



MACK CH PRIME MOVER / TIPPER



MACK CH PRIME MOVER / SIDE TIPPER



MINOR EARTH MOVING EQUIPMENT



KEY PROJECTS



ACCESS ROAD & WEST RIDGE CAR PARK - JOHN FORREST NP DBCA 2023 - 2025 | VALUE \$2.5 M

Proform Civil has been commissioned by DBCA to install the Access Road and the West Ridge Car Park in John Forrest National Park. The works involved installation of 700m access road and 9000sqm of car park including 300 car bays with multiple pathways and emergency access routes. The works involved vegetation clearing to the corridors, bulk earthworks including deep excavations, extensive fill works for subgrades, up to four metres high in some areas. Approximately 20,000 ton of material was imported for the project.

The works also included the installation of eight RCP road drainage crossings, 15 gullies and HDPE stormwater pipes.



Being in a sensitive bushland area where both the client and Proform Civil value the preservation of the hills and bushland aesthetic, a number of control measures were put in place whilst undertaking the clearing. A clearing corridor was defined by mapping the earthworks extents digitally. We then surveyed these extents, and a corridor was clearly marked on-site using high visibility flagging and tape. We then went through the entire scope of works with DBCA to mark trees which we were of significant value which must be kept, trees that were ideally kept but right on the corridor edge, and trees that presented a hazard which should be removed. The result to date has meant the retention of some significant vegetation which will enhance bushland presentation along this route while maintaining a decent tree canopy through the corridor.

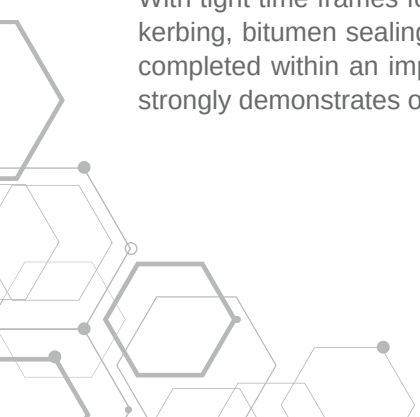
The project challenged us with a steep 30% cross slope severing truck access to the car park area. This was mostly overcome using track and wheel mounted loaders and excavators to transport materials and build up the area, providing track access to the remainder of the project.



The project was challenged with severe weather events including total fire movement bans and wet days. Vegetation was cleared and removed prior to hot weather to provide sufficient workable area away from combustible materials. Sufficient water and fire fighting gear was kept onsite during VHMB in working with DFES for site allowance, including a 9000L water cart and 2000L mobile fire unit.

The site was impacted by wet weather with clay conditions during winter months where the site became boggy and again inaccessible to trucks importing material. Construction of suitable access and stockpile areas were prioritised using crushed rock for its inherent properties to hold a compressive strength in wet months.

With tight time frames for the project due to wet weather delays, we managed our subcontractors for concrete, kerbing, bitumen sealing and asphalt in a back to back manner which meant the post earthmoving works was completed within an impressive four week turn around. Considering the size of this project, this achievement strongly demonstrates our project management ability.





Above - 735m Access road construction in progress. | Below - Completed access road and carpark stairs.





HYDEN CAR PARK

VALUE \$200 K

Proform Civil was contracted to design and install the Hyden Community Car Park, situated next to the Hyden Aquatics Centre. The car park is not only used for customers but also for the town's many tourists and local residents passing through to access the town's amenities. The existing gravel car park was to be upgraded to a sealed surface and the low-lying topography meant that flooding was frequent. The car park also had some of the town's most historically significant trees which were to be protected throughout construction.

We developed a design that would allow the car park to be sealed and drained requiring it to be raised by half a metre in some areas. Some 100m of drainage network, 2500t of gravel and 2500 sqm of asphalt was installed by Proform Civil.

Using a positrack, a small twin drum vibrating roller and a 15t excavator, we were able to work around the large and significant trees that were in close proximity to the works. With careful excavation, we were able to locate the underground optic fibre and re-route the underground water supply so that we could install adequate stormwater drainage.

Working in wet conditions with a high clay content gravel, careful attention needed to be paid to obtain a very precise moisture content to ensure proper compaction of the road base material to achieve adequate structural properties. With a very high outflow level and low floor levels of surrounding buildings, there wasn't a lot of room for grading, so our trimming needed to be on point for these flat and intolerable grades to ensure the car park would not pond.

Its strength, aesthetics and lack of ponding demonstrate our ability to deliver challenging civil projects. This project involved the installation of granular road base material, drainage pipes, kerbing and sealed surfaces. Our success in overcoming some of the many challenges shows our ability to install some of the most challenging civil construction projects.

INTERSECTION - MARALLA RD / RAILWAY PARADE

CITY OF SWAN | VALUE \$250 K

Proform Civil was contracted by the City of Swan to undertake road and drainage works to upgrade the intersection of Maralla Road and Railway Parade in Upper Swan. The intersection is on the edge of growing urban development with a high number of light vehicles accessing the adjacent residential development and heavy vehicles continually servicing the constant development projects in the area. The intersection was also challenged by the proximity of the railway line to the east. The existing rural-type intersection was struggling with poor geometry, pavement failures and stormwater issues.

The upgrade included installing new stormwater pipes and open drains, a 200mm thick limestone sub-base, 150mm thick crushed rock base course, two coat seal, SAMI seal and AC14 MRWA DG Asphalt, kerbing, central median islands and a 150mm thick reinforced 40mpa concrete apron behind all kerbing to allow for long vehicles, signage and line marking.

Proform Civil undertook all earthworks, and supervised seal, kerbing, signage and pavement marking through its subcontractors. Due to the works being within the railway corridor, we became inducted into PTA and supplied a railway safety management plan and safety officer to be onsite throughout the works.

Construction was negated under traffic allowing two lanes at all times. The project was completed with no safety incidents, on time and within budget.





HYDEN NORSEMAN ROAD TRIPLE RCBC SHIRE OF KONDININ | VALUE \$160 K

Proform Civil was engaged by the Shire of Kondinin to install multiple culverts along the Hyden Norsman road upgrade, one of which was a triple barrel box culvert.

Our 15 ton and 25 ton excavators were used for culvert construction of the RCBC's to assist in program delivery.

The culvert was constructed in two separate halves to allow one way passing traffic. The installation involved a screeded sand floor with concrete base slabs and crown units layer over Geofabric. Bitumen tape is installed over the exterior crowns whilst in the inside joins are mortared and silicone together.

Pre-cast headwalls we're then lifted in to place and mortared together.





Above - Installation of base and crown units to one half. | Below - Aerial view of project.



MARSHALL ST TRUCK STOP / CAR PARK – HYDEN

SHIRE OF KONDININ | VALUE \$100 K

Proform Civil was contracted by the Shire of Kondinin to construct the Marshall St Car Park/Truck stop in Hyden WA. The area is predominately used for passing road trailers and motor home enthusiasts as a resting point.

The site was challenged with flat and ponding areas with poor sub grades. Proform Civil undertook design and installation of a 135 meter drainage network, over 6000 sqm of gravel road base which was moisture conditioned and constructed in a vee type arrangement. The project was constructed to a budget and provides significant amenities to the town site of Hyden.



Above & Below – Coronation Car Park Hyden





CUNDERDIN-QUAIRADING ROAD DRAINAGE UPGRADE SHIRE OF QUAIRADING | VALUE \$200 K

Proform Civil was commissioned by the Shire of Quairading to install seven new concrete drainage crossings to the Quairading-Cunderdin Road.

The project consisted of multiple RCP crossings ranging from single barrel 300RCP to twin barrel 450RCP. A new triple barrel 1200 x 600 Box Culvert RCB crossing was also installed.

Each culvert required installation as a two-stage process, maintaining single lane one-way road operation under stop-go traffic management. Each culvert was backfilled with cement stabilised sand, by mixing up cement bulka bags onsite. Demolition and disposal of redundant pipes were included within the scope.

The project concluded on time and budget. The quality and workmanship provided by the Proform Civil team stands as a testament to today with the new culverts functioning under huge loads with recent events.



SUB DIVISION - 16 CHRISTINA STREET

HAZELMERE | VALUE \$50 K

Proform Civil was commissioned by Viniyak Projects to design and construct a four lot sub division at 16 Christina Street in Hazelmere which has to date included drainage and services.

The drainage component consisted of the installation of two 1800dia x 1200 deep pre-cast concrete soakwells and a 100m stretch of DN150 PVC stormwater pipe linking the proposed lots to the soak wells and council connection within the verge.

The council stormwater connection required careful service location and excavation around an existing underground 150mm dia asbestos conduit water main and underground telecoms, which we were able to complete without any property damage using a 6t excavator and manual digging.

The local ground conditions of Hazelmere consist of heavy clay which has a high bulking factor and proves to be very difficult to compact using conventional equipment. To avoid the extensive costs of disposing the clay and importing additional sand, we were able to re-use the clay above the sand haunch layer of the trenches by compacting it with a 1.5t remote control padfoot trench roller.

With this methodology, we achieved excellent compaction (up to 8-12 blows with a DCP penetrometer) which resulted in huge cost savings to the client in importing and carting of material.

The project also involved the installation of DN150 sewer connection, underground water supply, gas services, electrical and NBN services. We are awaiting council approval for the retaining walls, at which point we can complete the lots and asphalt access road.

Stage 1 of this project was delivered on time and within budget and demonstrates Proform Civil's ability to install pre-cast concrete and PVC drainage products as well as adapt to a wide range of civil service installations.



HOUSE PAD CLEARING & EARTHWORKS

WUNDOWIE | VALUE \$100 K

Over 2000 ton of sand was imported to build this 3m high, 700sqm house pad.



SEWER & WATER INSTALLATION 10 LOT SUB DIVISION

DAYTON | VALUE \$50 K

Proform Civil was contracted to install sewer and water for a residential development in Dayton. The project involved installation of a 100m of water line, and 50m of sewer.

We had to overcome many challenges for the sewer install including intercepting the existing sewer which was 5m deep using shore boxes. The trench was in very close proximity to low overhead powerlines so the largest machine we could use was a 15t excavator.

High ground water was encountered and dewatering was required. The sub siding material was a sticky clay and hard rock where we had to use a hydraulic rock breaker.

Proform Civil is Water Corp accredited for sewer and water installations like these.

TRIPLE BARREL BOX CULVERTS SHIRE OF CUNDERDIN | VALUE \$150 K

Proform Civil was contracted by the Shire of Cunderdin to design and install this triple barrel 1200 x 600 RCBC stormwater culvert on the Goomalling Meckering Road. The contract included multiple sized culvert crossings at 10 other locations on the same road.



DRAINAGE & EARTHWORKS BALCO BROOKTON / WESTERN STABILISERS | VALUE \$120 K

Proform Civil Sub Contracted to Western Stabilisers for the installation and general earthworks over stormwater culverts, open drains, shed pads and general earthworks for the installation of two new 4800 sqm shed pad's and surrounding road network.





KONDININ NAREMBEEN ROAD DRAINAGE UPGRADE

SHIRE OF KONDININ | VALUE \$300 K

Proform Civil was commissioned by the Shire of Kondinin to install 27 new concrete drainage crossings to Kondinin Narambeen Road.

The project consisted of multiple RCP and RCB crossings. Each culvert required installation as a two-stage process, maintaining single lane one-way road operation under stop-go traffic management. Each culvert was backfilled with cement-stabilised sand, by mixing up cement bulka bags onsite.

Demolition and disposal of redundant pipes were included within the scope. Each site was left neat and tidy, the culverts were installed to a high standard of workmanship and precision.

We were able to complete the project a month in advance, allowing the Shire to come in early to complete the road works.

The project was such a success that we are now highly recommended by the Shire of Kondinin and their preferred supplier for drainage installation and other earthmoving projects.

CULVERTS

SHIRE OF GOOMALLING
VALUE \$120 K

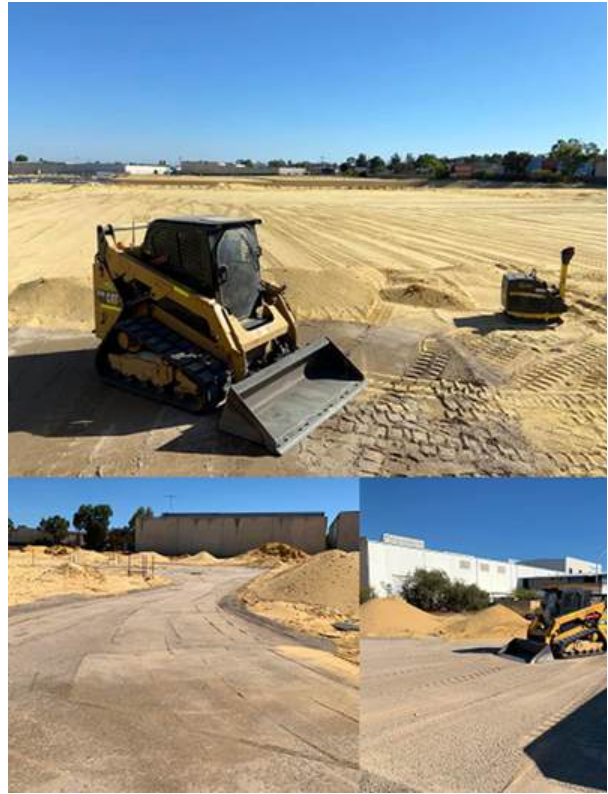
Six HDPE barrel culverts - 1050 diameter



EARTHWORKS PAD

CURTAIN WORLD MALAGA

3000 sqm sand pad and 500 sqm access track.



ROCK PITCHING



ASPHALT DRIVEWAYS



SHED PADS



ROAD GRADING





CONTACT US

www.proformcivil.com.au
dale@proformcivil.com.au
0424 630 251



ABN 56 492 398 579
95 Pendula Loop Brigadoon WA 6069